

Max Creasy

Architecture PDF

UK: +44 (0) 754 955 4586
DE: +49 (0) 175 479 1898
info@maxcreasy.com

Contents

3	Babylon	30	Peveril Gardens
4	St. Anne's Close	31	Gestures in Time
5	Cowshed	32	Studio for a Sculptor
6	Made in Bermondsey	33	The Ice Cream Factory
7	Villa Ringerike	34	Wallpaper*
8	Bogota	35	Brighton Business School
9	Charlie Bigham's Food Production Campus	36	A4
10	Reversible Destiny Lofts	37	Gestures in Time
11	Anupama Kundoo	38	Footnotes, backgrounds, sheds
12	Cowshed	39	Cowshed
13	Miami Bricolage	40	Westbourne Terrace
14	Souvenir Press	41	Hearth House
15	Kanzleistrasse	42	A4
16	Link House	43	Planphase
17	B4	44	Madina View
18	Kanzleistrasse	45	Farmhouse
19	Villa Hvam	46	OMMX
20	Storia	47	Cowshed
21	Kanzleistrasse	48	Villa Hvam
22	Hikaru Nissanke	49	House in Wales
23	Planphase	50	House in Wales
24	Stuttgart	51	Newrope
25	B4	52	Church
26	Cockpit Studios	53	Charlie Bigham's Food Production Campus
27	Thomas Saraceno	54	Manabar
28	Villa Hvam	55	Tomas Saraceno
29	Blackburn Station	56	Villa Hammer





St.Anne's Close Hayatsu Architects



Cowshed David Kohn Architects





Villa Ringerike Dyvik & Fasting Arkitekter





Charlie Bigham's Food Production Campus Feilden Fowles



Reversible Destiny Lofts Arakawa and Gins



Anupama Kundoo



Cowshed David Kohn Architects









Link House Kastler Skjeseth Architects







Villa Hvam Dyvik & Fasting Arkitekter







Hikaru Nissanke

Planphase

AUSGABE No 6, WINTER 16/17



BEST BEFORE

ISSN 2367-2226
10 EURO









Tomás Saraceno

SARACENO HAS MOCKED UP HIS FORTHCOMING PALAIS DE TOKYO SHOW IN THE STORAGE FACILITY NEXT TO HIS MAIN STUDIO. ONE OF THE INSTALLATIONS WILL BE A THERMODYNAMIC IMAGINARY, SEEN HERE. A THEATRE OF SHADOWS THAT COMPRISES BODIES OF WORK FROM THROUGHOUT HIS CAREER





Blackburn Station Hassell



Peveril Gardens Sanchez Benton architects







Wallpaper*

OCTOBER 2018

*THE STUFF THAT REFINES YOU

UK £10.00
US \$16.99
AUS \$16.99
CDN \$17.99
DKK 125.00
FR €14.50
DE €14.90
ITA €14.50
JPN ¥2000
SGP \$28.50
ES €14.00
CHF 18.90
AED 85.00

2 Guest Editors

Tomás Saraceno

Science, spiders and the rise of urgent art

Neri Oxman

Honeybees, fibrebots and nature rebooted

+ Much more unusual greatness, including Prince Charles and his cheese-and-wine-powered Aston Martin







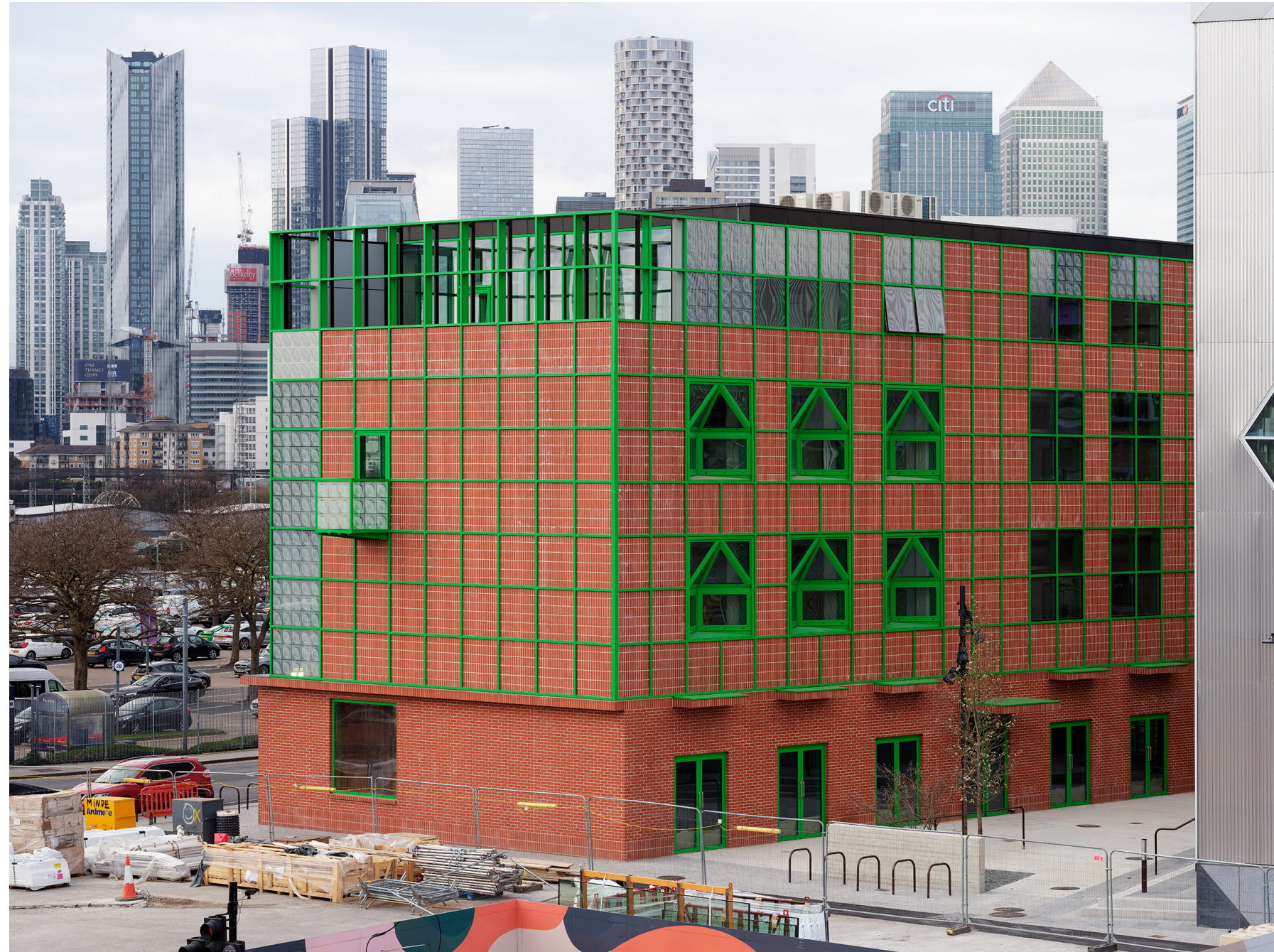












Planphase

AUSGABE No 7, SOMMER 18



LEARNING FROM

ISSN 2367-2226
16 EURO



Madina View George Bunkall Architects



Farmhouse of the Tsunashima Family





Cowshed David Kohn Architects





House in Wales Martin Edwards Architects



House in Wales Martin Edwards



Church



Charlie Bigham's Food Production Campus Feilden Fowles



Manabar Weyell Zipse



Tomas Saraceno Wallpaper*



Villa Hammer Sauter von Moos

Max Creasy is a visual artist living and working between London and Berlin. He regularly collaborates with other artists, curators, designers and architects including Sauter von Moos, David Kohn Architects, OK-RM, James Taylor-Foster and Lütchens Padmanabhan Arkitektet*innen. Recent publications include *In Miami in the 1980's: The Vanishing Architecture of a Paradise Lost, Casual Relationships, and Footnotes, Backgrounds, Sheds – The Drawing Matter Archive* by Hugh Strange Architects. His work has been widely exhibited at commercial and institutional galleries including the Nasjonal Museet, Oslo, Norway; Centre for Contemporary Photography, Melbourne; and the Australian Pavilion at the Venice Architecture Biennale. In 2009 he completed a Master of Fine Arts at the College of Fine Arts, UNSW, Sydney.

A link to his artistic practice can be found [here](#).

UK: +44 (0) 754 955 4586
DE: +49 (0) 175 479 1898
info@maxcreasy.com